

Memory Switch Setting Utility User's Manual

Rev. G

Table of Contents

1	Introduction	1
1.1	Purpose of This Manual and Target Users	1
1.2	Composition of This Manual	1
1.3	Note in the case of using this utility.....	1
1.4	System operating environment.....	1
2	Installation	2
2.1	System Requirement	2
2.2	Installation.....	2
2.3	Un-installation.....	4
2.4	Web Update.....	5
3	Basic Operation	6
3.1	Confirm the communication conditions with a printer	6
4	Printer Status.....	8
4.1	Operation: Get status, Set status, Save status, Read status, and Initial settings	8
4.2	Memory Switch Setting	9
4.3	DIP Switch	9
4.4	Communication conditions / User NV / User NVG.....	10
4.5	Customize Value	11
4.6	Reset-Possible Maintenance Counter	11
4.7	Paper Layout Setting.....	12
4.8	Expanded Customize Value.....	12
5	Printer Sequence	13
5.1	Paper layout automatic setting.....	13
5.2	Head Nozzle check pattern setting.....	13
6	Convenient Usage	14
6.1	Automating the Operation	14
6.2	Starting up with the Command Line	14
6.3	Command Line Options.....	15
6.4	Example of Using the Command Line Option	15
7	Appendix.....	16
7.1	Error Messages	16

1 Introduction

1.1 Purpose of This Manual and Target Users

This manual explains about installation and operation of Memory Switch Setting Utility. This manual is for the person in charge of the TM Printer operator.

1.2 Composition of This Manual

Chapter 2 explains the method of installing the utility.

Chapter 3 to 6 explains the method of operating the utility.

Chapter 7 explains the utility's error messages and how to solve the problem.

1.3 Note in the case of using this utility

Parallel port uses the LPT1 with the computer, but parallel port does not operate when printer driver is mounted to the LPT1 in Windows NT.

In case that the utility (English) is installed to the OS (Japanese), the characters occasionally display missing on the display. Then you need to change the area setting of the control panel in the computer. Roll paper setting

It occasionally happens that Touch Panel does not function when this utility is performed with EPSON IM-310 or EPSON SR-600. Then you need to get EPSON Touch Panel Driver, and install it in the computer.

1.4 System operating environment

This application operates only on the operating system below.

- Windows 8 32Bit/64Bit
- Windows 7 SP1 32Bit/64Bit
- Windows Vista Business/Ultimate/Home Premium/Home Basic/Enterprise SP1 32Bit/64Bit
- Windows XP Professional SP3 32Bit
- Windows 2000 Professional SP4

2 Installation

This chapter explains how to install the Memory Switch Setting Utility. Read this chapter when you install it.

2.1 System Requirement

Be sure to confirm the system requirement (OS, HDD space) before installing utility. For more details, refer to the release note.

2.2 Installation

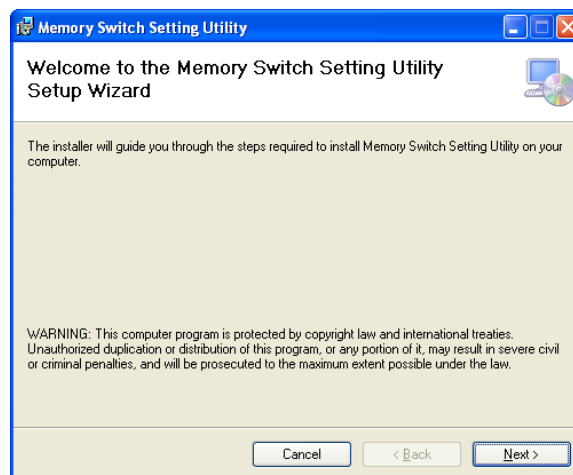
Follow the steps below to install utility.

2.2.1 Start your operating system.

Run "MSWUTL_XXXXXX.msi" in the setup disk.

The install program of utility starts.

2.2.2 Welcome

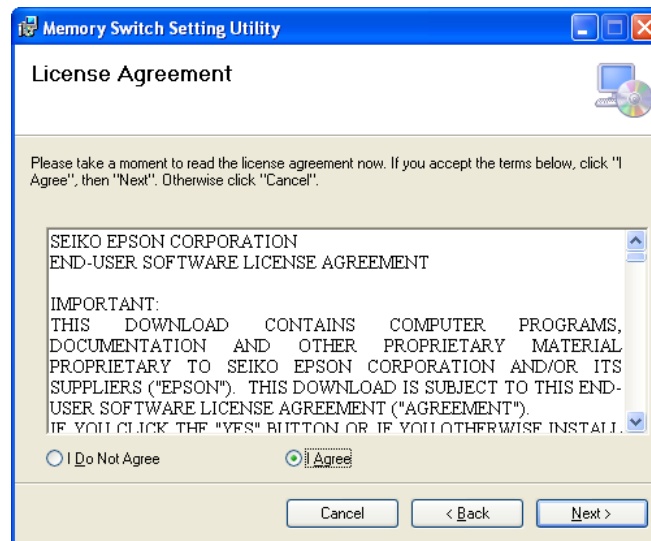


Be sure to read it.

To continue installing, click [Next].

* Click [Cancel] to stop installation.

2.2.3 License Agreement

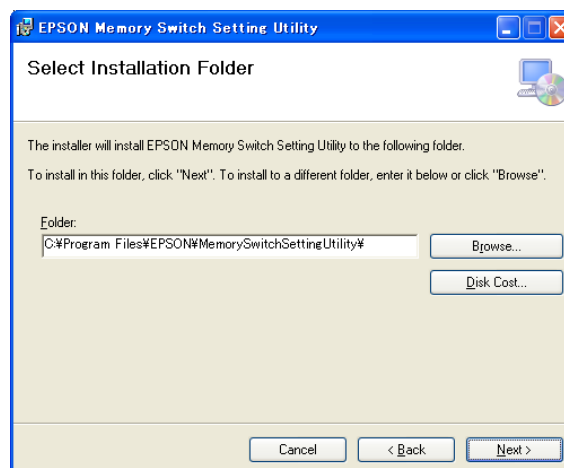


Be sure to read the License Agreement.

To continue installing, click [Next].

* Click [Cancel] to stop installation.

2.2.4 Select Installation Folder



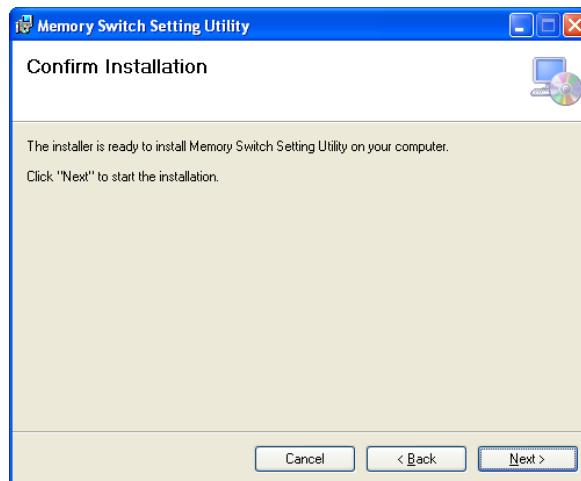
- Click [Next] if you want to install the utility in the folder displayed in the Folder. Utility is installed in the folder you set here.

- To change the folder.

Click [Browse...] to select a new folder. Click [Next] to continue installing.

* Click [Cancel] to stop installation.

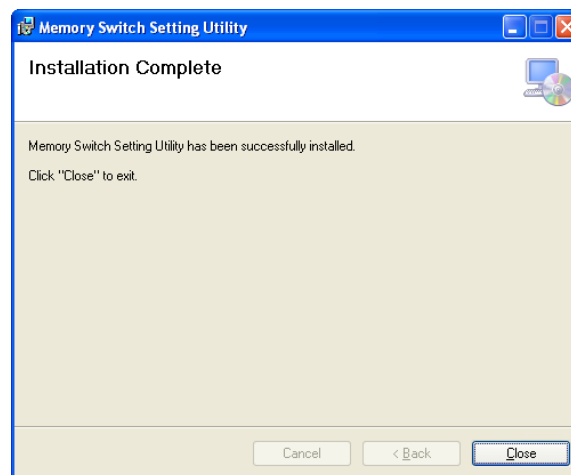
2.2.5 Confirm Installation



Click [Next] to continue installation.

* Click [Cancel] to stop installation.

2.2.6 Installation Complete



- When the installation is completed, the Installation Complete dialog box appears. Click [Close] to complete the installation.

2.3 Un-installation

You can uninstall utility using Add/Remove Programs in the Control Panel.

Follow the steps below to uninstall utility.

2.3.1 Control Panel

Double-click the Control Panel icon.

2.3.2 Add/Remove Programs Properties

Run Add/Remove Programs that is located in the Control Panel of your operating system.

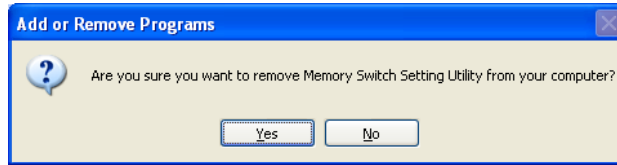
2.3.3 Select utility

Select Memory Switch Setting Utility from the list.

2.3.4 Remove

Click [Remove].

2.3.5 Confirm the file deletion



If the message appears, click [Yes] to delete Memory Switch Setting Utility.

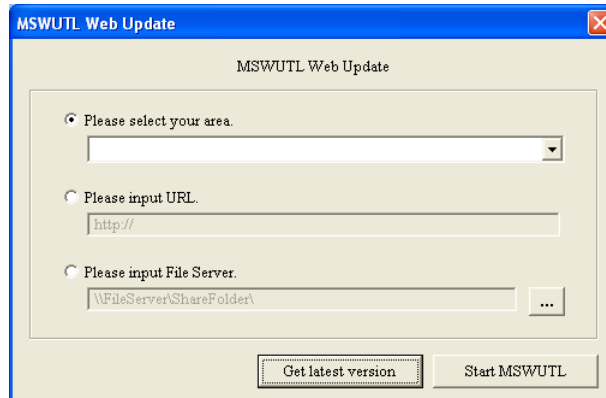
* If you select [No], the uninstallation will be canceled.

2.3.6 Remove Programs from your Computer

The program is uninstalled automatically.

2.4 Web Update

When MSWUTL is installed, Webupdate.exe is installed together too. We release the update module from epson-poso.com site when the program is updated.



Functions

Please select your area

Uses the epson-pos.com as update server.

Update modules are released from epson-pos.com for each area. You can specify the area from JAPANESE, USA, EUROPE and ASIA.

Please input URL.

Uses your web server as update server. If you have update module, place update module to your web server and specify the address.

Please input File Server

Uses your file server as update server. If you have update module, place update module to your file server and specify the address.

[Get latest version]

MSWUTL is updated if latest module was released.

[Start MSWUTL]

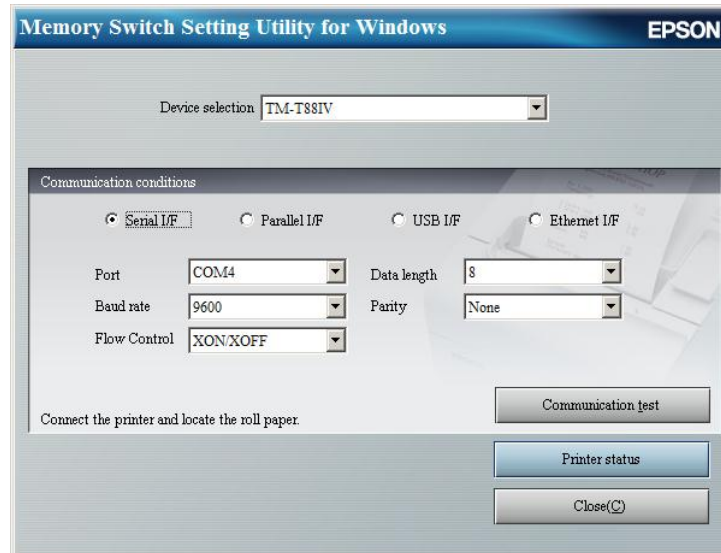
MSWUTL is started.

3 Basic Operation

This chapter explains the operation of Memory Switch Setting Utility

3.1 Confirm the communication conditions with a printer

When the utility is operated, the Communication conditions dialog box appears.



You can confirm whether the computer can communicate with a printer by execution the communication test in this dialog.

Functions

Serial I/F, Parallel I/F, USB I/F or Ethernet I/F

Select the I/F used with the printer.

Set the following parameters when the serial I/F is selected.

– Port

Select the port where the printer is connected.

– Baud rate

Select the same value as the baud rate set in the printer.

– Data length

Select the same value as the data length set in the printer.



Note:

Select only 8 bits to control the printer.

When the printer is set in 7 bits, change to 8 bits.

– Parity

Select the same value as the parity set in the printer.

– Flow Control

Select the same value as the flow control set in the printer.

– IP Address

Specify the same value as the IP Address set in the printer.

[Refresh Port]

Search the connected printer with USB Port.

Normally the following message appears.

[Communication test (T)]

Confirm whether the connected printer is TM or not.



Note:

To execute the communication test, roll paper is inserted in the TM printer and the printer is ready to start printing.

[Printer status]

Execute the acquisition, setting, editing, and saving for the status set to the printer.

[Finish (F)]

Terminate UTILITY.



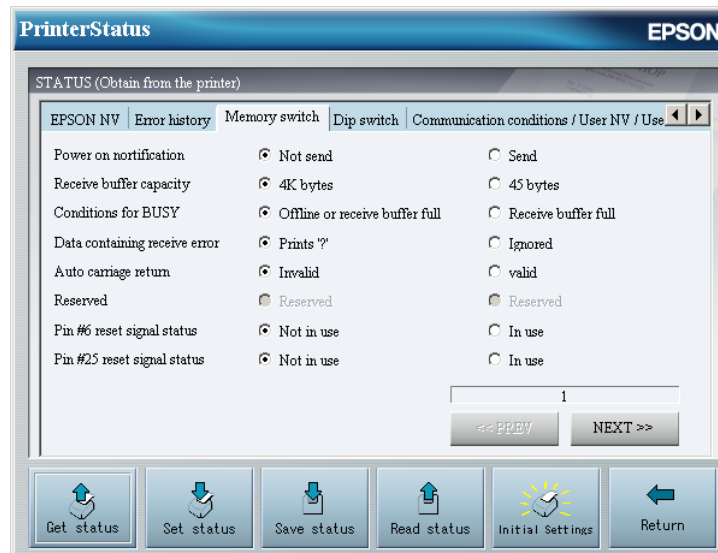
Note:

- The values set when utility is ended can be used for the next time you start utility.

4 Printer Status

When the [Printer status] button is selected in the Communication setting dialog box, the Printer Status dialog box appears.

4.1 Operation: Get status, Set status, Save status, Read status, and Initial settings



In this screen, you can acquire or update the value saved in the printer and the value of switches. Also, you can save the acquired value to the file and read that file. The displayed item may differ depending on the printer model.

Functions

Get status

Acquire the set value being saved by the connected printer and display them on the screen.

Set status

Set the value that can be updated in the value displayed on the screen to the printer.

Save status

Save a set value of the printer displayed on the screen to the file.

Read status

Read the set value saved in the file and display them on the screen.

Initial settings

The printer can be set to the default values.

Return

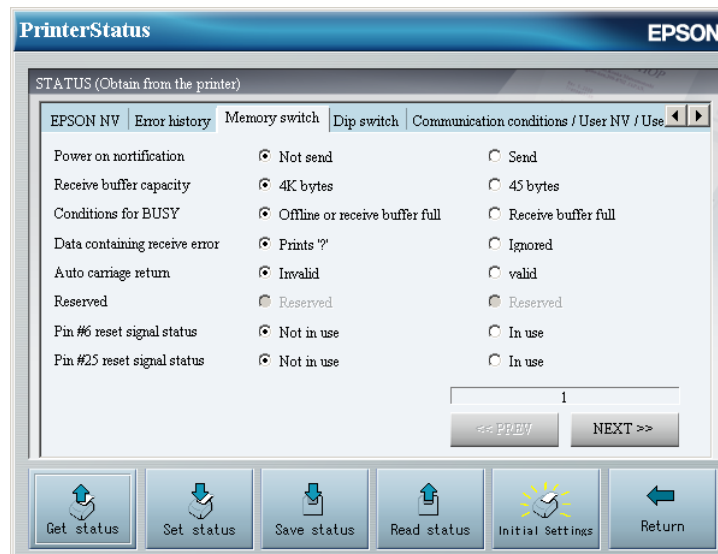
Terminate the Printer status screen and return to the Communication setting screen.



Note:

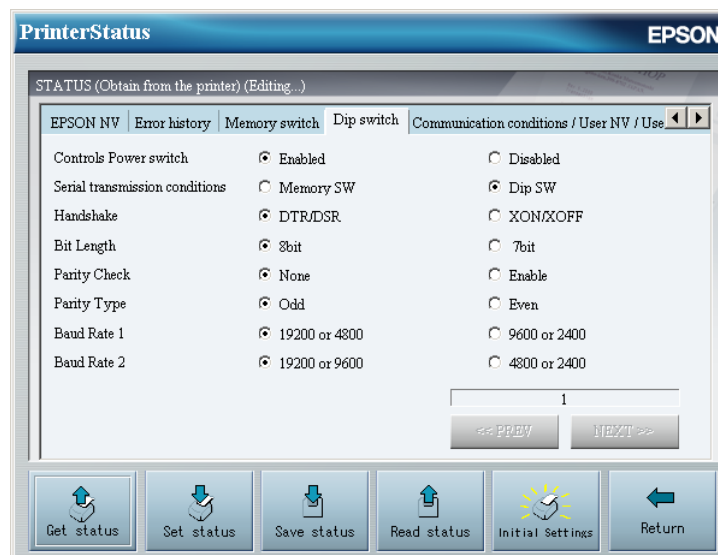
- When a set value is edited, "Editing" is displayed on the screen.
- When the default value is used, "Factory default" is displayed on the screen.
- When the data acquired from the printer is displayed, "Acquire from the printer" is displayed on the screen.
- When the data read from the file is displayed, "Read from the file" is displayed on the screen.

4. 2 Memory Switch Setting



In this screen, the state of the memory switch set in the NV memory is displayed. A set value can be changed by the status update. The displayed item may differ depending on the printer model.

4. 3 DIP Switch



In this screen, a set value of the DIP switch can be read. A set value of the DIP switch cannot be changed. The screen above is a screen when operating with TM-L90. The displayed item may differ depending on the printer model.

4. 4Communication conditions / User NV / User NVG

The screenshot shows the 'PrinterStatus' window with the 'Communication conditions' tab selected. The settings are as follows:

Setting	Value
Baud rate	19200
Parity	None
Flow control	DTR/DSR RTS/CTS
Data length	Not Supported
User NV usage capacity	0
User NV remaining capacity	1024
User NVG usage capacity	0
User NVG remaining capacity	262144

Buttons at the bottom: Get status, Set status, Save status, Read status, Initial Settings, Back.

In this screen, the state of the communication conditions, user NV and user NVG are displayed. The displayed item may differ depending on the printer model.

-Baud rate

Displays the baud rate value saved in NV memory of printer.



Note:

- When operating on parallel interface or on serial interface with dip switch setting, these communication conditions of NV memory have no effect on printer behavior.
- When you changed the communication conditions of NV memory, the connection with printer might be failed. In this case, return to the connection condition screen and modify the connection condition again.

-Parity

Displays the parity value saved in NV memory of printer.

-Flow control

Displays the flow control setting saved in NV memory of printer.

-Data length

Displays the data length value saved in NV memory of printer.

-User NV usage capacity

Displays the usage capacity of user NV memory.

-User NV remaining capacity

Displays the remaining capacity of user NV memory.

-User NVG usage capacity

Displays the usage capacity of user NV graphics memory.

-User NVG remaining capacity

Displays the remaining capacity of user NV graphics memory.

4. 5Customize Value

PrinterStatus **EPSON**

STATUS (Obtain from the printer) (Editing...)

Memory switch | Dip switch | Communication conditions / User NV / User NVG | **Customize value** | < >

User NV memory capacity	1KB
User NV graphics memory capacity	384KB
Print density	100%
Print speed	level 6
Print control method	Non-divided energizing
Paper type(mono or color)	Single color
Paper width	80

1/2

<< PREV NEXT >>

Get status Set status Save status Read status Initial Settings Return

The value of this screen can be changed by push the “Set status” button. The displayed item may differ depending on the printer model. The displayed item may differ depending on the printer model.

4. 6Reset-Possible Maintenance Counter

PrinterStatus **EPSON**

STATUS (Obtain from the printer) (Editing...)

Customize value | Integrating counter | **Reset-possible maintenance counter** | Paper layout | < >

Check the maintenance counter to be reset to update the status.

<input type="checkbox"/> Number of line feeds	169959
<input type="checkbox"/> Head current_carrying count	22260
<input type="checkbox"/> Autocutter	16
<input type="checkbox"/> Working Time	0

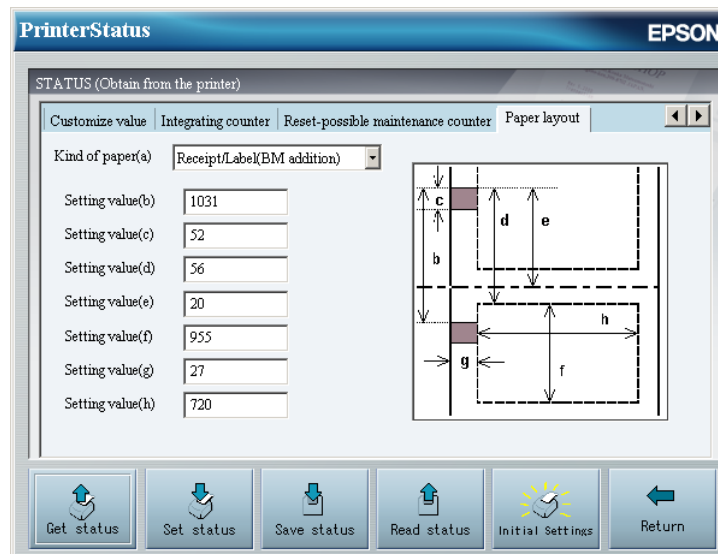
1/1

<< PREV NEXT >>

Get status Set status Save status Read status Initial Settings Return

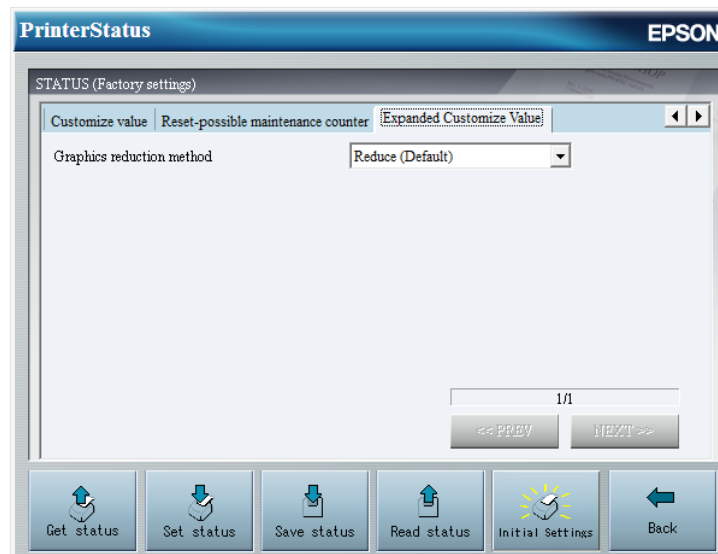
In this screen, the counter value of the maintenance counter which can be reset is displayed. A check marked maintenance counters can be reset by the Set status button. The displayed item may differ depending on the printer model.

4. 7 Paper Layout Setting



In this screen, a set value of each kind of paper can be confirmed, changed, or cleared. The screen above is a screen when operating with TM-L90. The displayed item may differ depending on the printer model

4. 8Expanded Customize Value



The value of this screen can be changed by push the "Set status" button. The displayed item may differ depending on the printer model. The displayed item may differ depending on the printer model.

5 Printer Sequence

Memory Switch Setting Utility can execute the following printer sequences.

5. 1 Paper layout automatic setting

When the connected printer model is a label printer, displays the function in which the kind of paper can be change. When you click [Next] in the “Communication conditions” screen, the Printer sequence selection screen appears.

By this function, you can make the printer recognized what the kind of paper when the other paper is inserted. Necessary information to execute “paper layout automatic setting” is displayed on the screen. Read the information and click [Next] button.

Return(R)

Return to the Communication setting screen.

Next (N)

Go to the selected sequence screen.

Finish (F)

Stop the operation and terminate MSWUTL.

5. 2 Head Nozzle check pattern setting

When the connected printer model is a inkjet printer, displays the function by which you can confirm whether each nozzle of Print-Head operates normally. When you click [Next] in the “Communication conditions” screen, the Printer sequence selection screen appears.

Necessary information to execute “Printing of the Head Nozzle check pattern” is displayed on the screen. Read the information and click [Next] button.



Note:

When you are not satisfied with the print result, clean the nozzle according to the on-screen information and print again.

Return(R)

Return to the Communication setting screen.

Next (N)

Go to the selected sequence screen.

Finish (F)

Stop the operation and terminate MSWUTL.

6 Convenient Usage

6.1 Automating the Operation

Some operations with the keyboard input or the mouse can be automated by adding a command line option to the command line used for starting up Memory Switch Setting Utility.

6.2 Starting up with the Command Line

Select one of the following to startup utility using the command line.

- Startup from the DOS prompt
- Startup using Run in the Start menu
- Startup by the short cut icon

6.2.1 Startup from the DOS prompt

Follow the steps below to startup utility from the DOS prompt.

1. Run the DOS prompt.
2. Move to the directory where utility is installed.
For example: Run `cd c:\Program Files\EPSON\UTILITY`
3. Startup utility.
For example: Run `utility`

Utility is started.

6.2.2 Startup using Run in the Start menu

Follow the steps below to startup utility using Run in the Start menu.

1. Click the [Start] button in the task bar.
2. Select **Run** from the Start menu.
3. Click [Browse].
4. Select the directory where utility is installed. Select utility and click [Open].
5. Click [OK].

Utility is started.

6.2.3 Startup by the shortcut icon

Follow the steps below to startup utility by creating a shortcut icon.

1. Start the Explorer.
2. Select **New** and then **Shortcut** from the File menu.
3. Click [Browse].
4. Select the directory where utility is installed. Select utility and click [Open].
5. Click [OK].
6. Click [Next]. Confirm the name of the shortcut and click [Finish].
7. Double-click the shortcut icon you have created.

Utility is started.

6. 3 Command Line Options

6.3.1 Adding the command line option

See the following to add the command line option to the command line.

Using the DOS prompt or Run in the Start menu

The command line option is continuously added to the end of the command line.

Using the shortcut icon

Open the shortcut icon's properties, and add the command line option to the end of the file name registered to the Link to text box.

* The command line option is divided by blanks.

* The number of characters of the command line and the command line option must be within the 255 characters.

6.3.2 Composition of the command line option

The command line option is composed as follows.

Division	Blank (space)
Beginning of the option	(minus sign) or/(slash)
Symbol of the option	Alphabet of two characters
Argument	Set value of option

6. 4 Example of Using the Command Line Option

Some operations can be automated as follows by using the command line option.

1. TM connected with LPT1 is controlled.


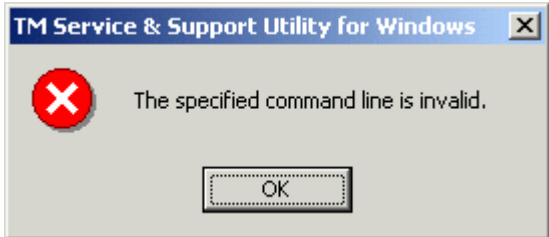
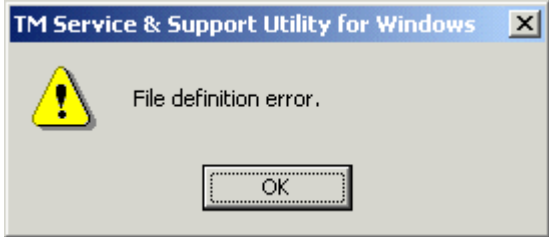

UTILITY -ifLPT1

It starts up with LPT1 selected when this command line is used.

7 Appendix

7.1 Error Messages

You might see the following messages while using Memory Switch Setting Utility.

Class	Error message screen	What to do
Communication		<p>Make sure of the following points and then click [Retry].</p> <ul style="list-style-type: none"> - Does the communication parameter match the printer? - Is the I/F cable surely connected? - Is the printer turned on? - Is the printer online? <p>Click [Cancel] to cancel the operation.</p>
Command line		<p>The specified command line is invalid.</p> <p>Confirm the command line and retry.</p>
Others		<p>There is no description printer ID in the utility.INF file.</p> <p>Or, there is no utility .INF.</p> <p>Reinstall the utility.</p>
		<p>There is no description concerning a user ID in the UTILITY.INF file.</p> <p>Or, there is no utility.INF.</p> <p>Reinstall the utility.</p>